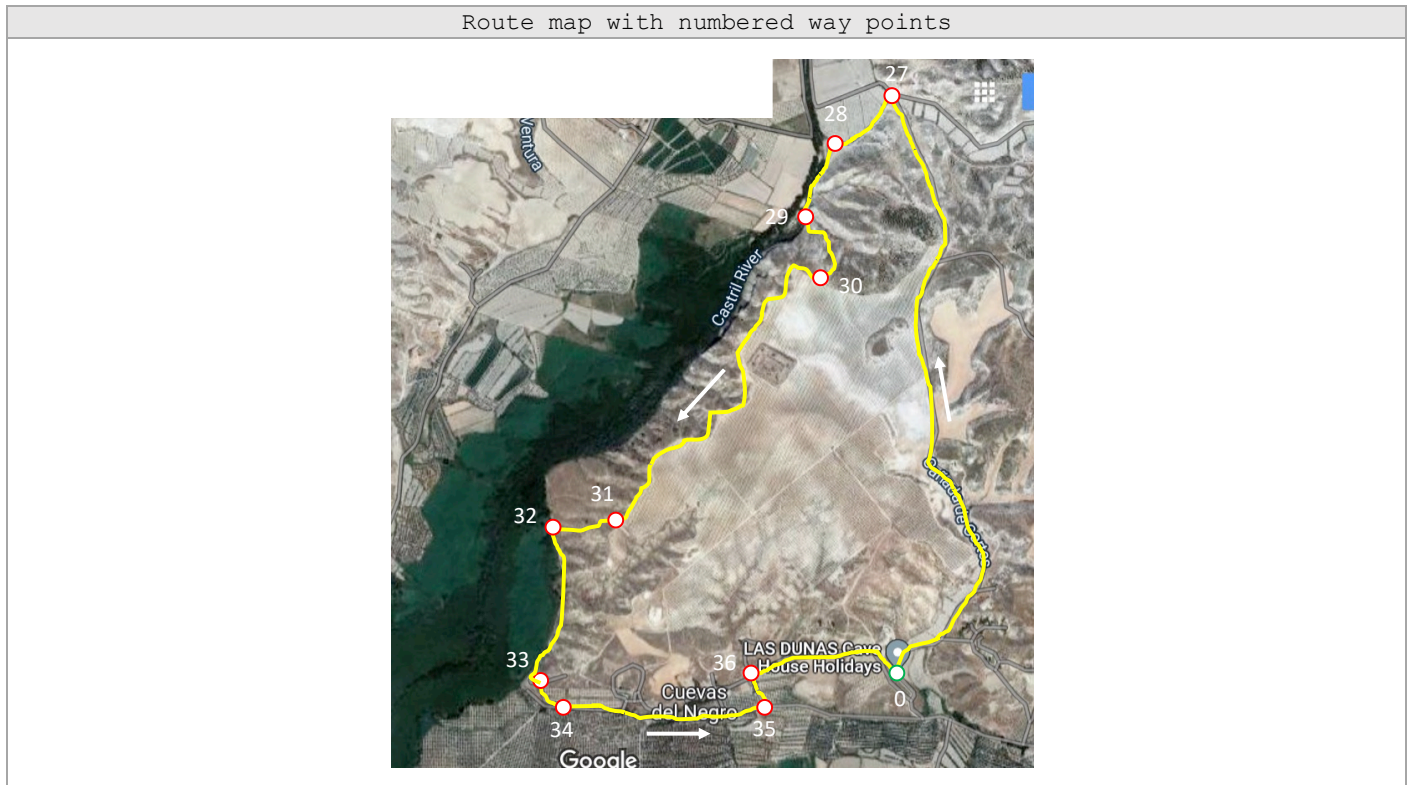
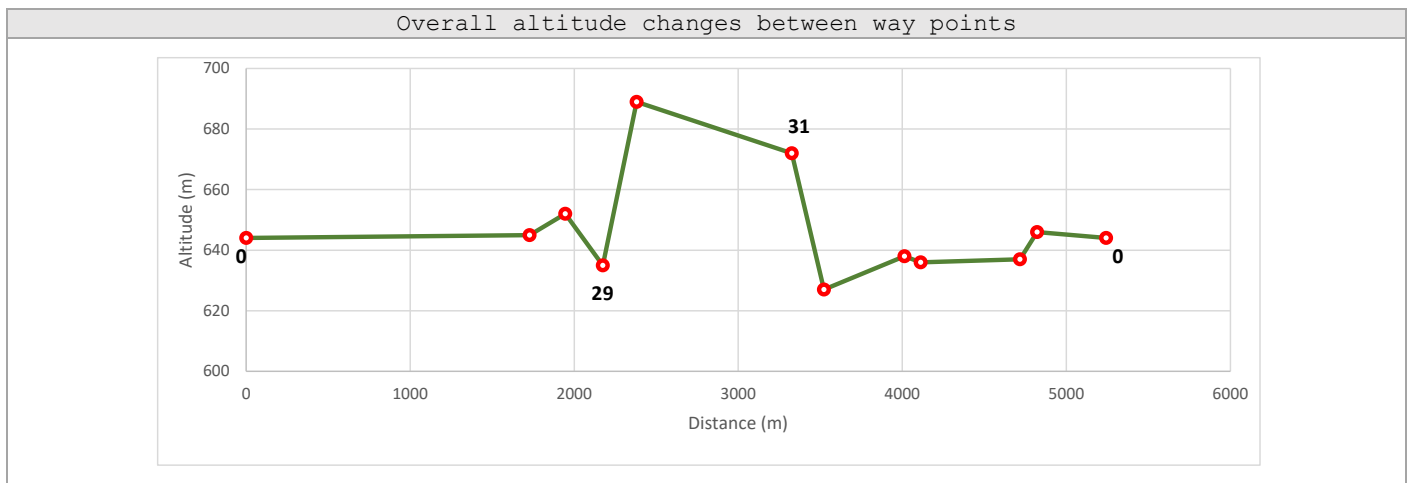


LAS DUNAS TO CASTRIL VALLEY		
Circular route, returning along edge of valley escarpment.		
Walk through the lunar-like landscape dotted with cave houses to the Castril river, then return along the cliff-top of the escarpment overlooking the wide river valley. The path along the edge of the cliff beside a fenced-in almond orchard is very narrow which makes this route unsuitable for mountain bikes.	Total Distance	6 km
	Uphill Height Gain	+ 83 m
	Downhill Height Loss	- 183 m
	Time, walking	1 hr 30 min





Follow Way Points in the sequence described and shown on the map. These are **not** necessarily in numerical order.

Key to map	
N	Way Point N : Latitude & Longitude in decimal degrees, altitude in metres
←	Turn left at Way Point
→	Turn right at Way Point
↑	Straight on at Way Point
m/km	Approximate distance to next Way Point in metres or kilometres
↗ m	Overall increase in altitude + meters to next Way Point
↘ m	Overall decrease in altitude - meters to next Way Point



0	Las Dunas, Cuevas del Negro : 37.608663°N, -2.776097°W, 644m alt.
← 2 km ↗ 1 m	At the Cueva del Olivo entrance to Las Dunas, turn left down the white gravel surfaced road towards Cortes de Baza (Cañada de Cortes). Pass through a lunar landscape with cave houses built into the cliffs on the right. The road climbs with an almond orchard on the left, then descends through a cutting. At the bottom of the slope is a cliff directly ahead with several cave openings cut into it. There is a crossroad of tracks off the road to the left and right just before a bend in the road below the cave openings down to the river; this is the next way point (Way Point 27). If you get to the bridge across the river, you have gone too far!
27	Track Turning off Cañada de Cortes : 37.624203°N, -2.776290°W, 645m alt.
← 200 m ↗ 7 m	At the crossroad of tracks, take the turning off the road to the left. The path skirts the bottom of the cliff on your left, with cultivated fields on your right and leads down to the river.
28	Path by R. Castril : 37.622919°N, -2.778148°W, 652m alt.
→ 300 m ↘ 17 m	From the river bank, to continue the walk, retrace your steps about 50m to where a goat path diverges to your right (or left from the original route) and hugs the side of the cliff. Follow this path with the cliff on your left and river on your right. It descends into the dry ravine of a tributary. Cross this and continue to follow the river through a marshy area to the next ravine (Way Point 29).
29	Path by R. Castril, up ravine : 37.621041°N, -2.779232°W, 635m alt.
← 300 m ↗ 54 m	Pick out a goat path to the left leading up the ravine. There is a rusty black & white diagonally divided rectangular sign (Coto de Caza boundary) beside the path. Follow the path that climbs up the ravine to the top of the cliff. This is an area with a lot of gypsum/selenite crystals lying around.
30	Almond Orchard Fence : 37.619214°N, -2.778835°W, 689m alt.
→ 1.5 km ↘ 17 m	At the top, the path opens out beside a metal mesh fence enclosing an almond orchard (the same one you passed beside on the way and which you will skirt around for the return part of the walk). Mount Jabalcón is visible directly ahead in the distance. Follow the goat path beside the fence to the right. Continue to follow the path, keeping the fence on your left, as it zig-zags along the escarpment cliff edge. Be careful; in some places the width of the path between the fence and the cliff edge is very narrow with steep drops.
31	Fire Watch Tower above Castril Valley : 37.612664°N, -2.785672°W, 672m alt.
→ 200 m ↘ 45 m	At the green fire watch tower, descend to a track beside the river (amongst the trees) on your right, picking your way down either of the goat paths on the near or far-side of the bluff.
32	Track by R. Castril, below Fire Watch Tower : 37.612720°N, -2.787900°W, 627m alt.
← 600 m ↗ 11 m	On reaching the vehicle track beside the river, follow it to the left. Mount Jabalcón is straight ahead, the Castril river on your right. Pass by a number of large cave openings in the cliff face. After about 0.5 km, the track bends to the left and climbs into an olive grove.
33	Track Turning in Olive Grove, Cuevas del Negro : 37.608317°N, -2.788331°W, 638m alt.
→ 100 m ↘ 2 m	Where the track divides in the olive grove, take the turning to the right.
34	Track Junction in Olive Grove, Cuevas del Negro : 37.607646°N, -2.787585°W, 636m alt.
← 700 m ↗ 1 m	The track joins a main track at a T-junction. Turn left and follow the main track, passing farm buildings on your left and an electricity transformer tower on your right.
35	Road Junction, Cuevas del Negro : 37.607693°N, -2.780719°W, 637m alt.
← 100 m ↗ 9 m	At the junction with the surfaced road (zona de seguridad sign) turn left up to the cluster of cave houses. There are likely to be barking, but harmless, dogs to welcome you.

36	Track Turning, Cuevas del Negro : 37.608577°N, -2.781105°W, 646m alt.
 500 m  2 m	Take first turning off the track to the right in front of the cave houses. Pass several cave houses on your left. Follow the line of wooden electricity poles on your left and metal pylons on your right. You will come to the entrance to Las Dunas directly ahead after about 0.5 km.
0	Las Dunas, Cuevas del Negro : 37.608663°N, -2.776097°W, 644m alt.
	Arrive at upper entrance to Las Dunas.