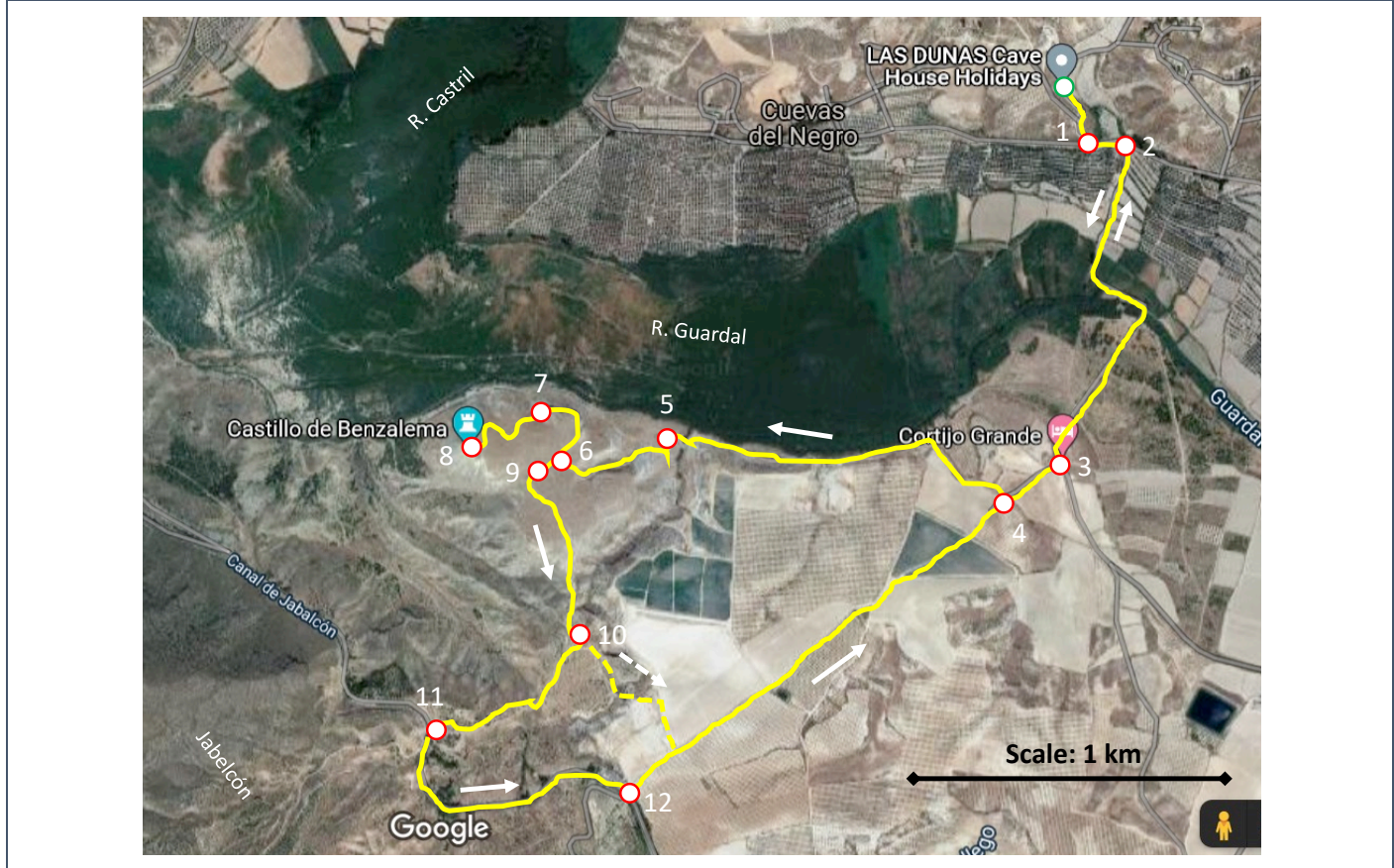


LAS DUNAS TO CASTILLO DE BENZALEMA		
Circular route, return via Canal de Jabalcón		
Walk or cycle to the ruins of the Moorish Castillo de Benzalema on a rocky bluff giving spectacular views over the confluence of the Guardal & Castril valleys, olive groves & almond orchards. The route encompasses viewpoints overlooking the Baza geological fault & dramatic ravines within the Granada Geo Parque. Jabalcón mountain looms in the background at all points on the route.	Total Distance	7 km
	Uphill Height Gain	+ 176m
	Downhill Height Loss	- 176m
	Time, walking	2 hours

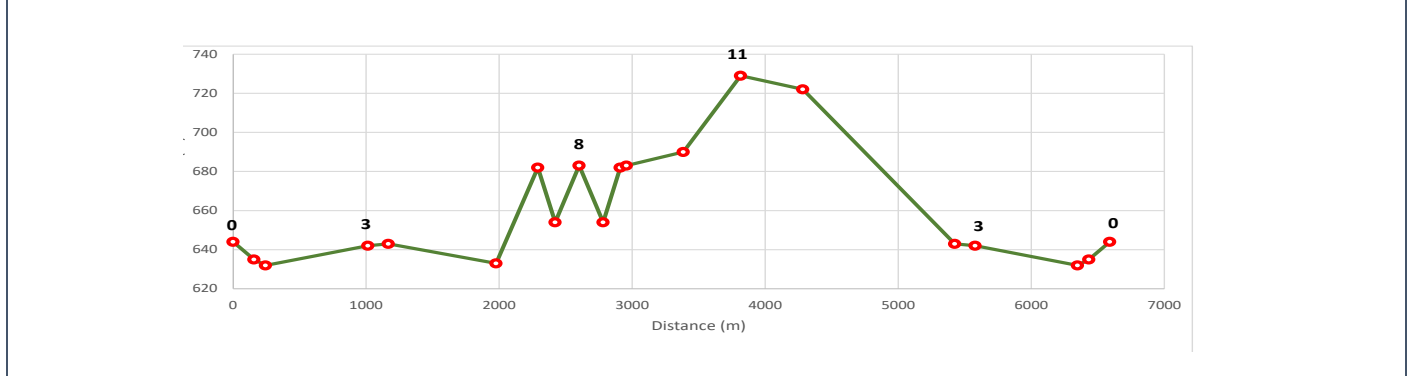
Route map with numbered way points



Follow Way Points in the sequence described and shown on the map. These are **not** necessarily in numerical order.

Key to map	
N	Way Point N : Latitude & Longitude in decimal degrees, altitude in metres
←	Turn left at Way Point
→	Turn right at Way Point
↑	Straight on at Way Point
m/km	Approximate distance to next Way Point in metres or kilometres
↗ m	Overall increase in altitude +Zm to next Way Point
↘ m	Overall decrease in altitude -Zm to next Way Point

Overall altitude changes between way points



0	Las Dunas, Cuevas del Negro : 37.608663°N, -2.776097°W, 644m alt.
← 150 m ↘ 9 m	At the turning to Las Dunas, facing in the direction of Jabalcón mountain, turn left down the unsurfaced track to the STOP sign at the junction with the surfaced road.
1	Stop Sign, junction of Cuevas del Negro (turning to Cortés de Baza) 37.607395°N, -2.775306°W, 635m alt.
← 50 m ↘ 3 m	At the STOP sign, turn left on the surfaced road and walk about 50m.
2	T-Junction, Cuevas del Negro, road to Baza : 7.607335°N, -2.774333°W, 632m alt.
→ 800 m ↗ 10 m	At the first T-Junction turn right onto unsurfaced track, sign-posted BAZA (hand-painted sign) and "E4/GR-7 P. Negratin lh45m" (carved wooden signpost). Follow track, crossing the River Guardal at the ford or narrow metal bridge. Continue on the surfaced road up to the ruined farmhouse (Cortijo Grande) on the crest. The Castillo Benzalema can be seen on the rocky bluff overlooking the Guardal valley in the distance on the right.
3	Cortijo Grande : 37.600564°N, -2.776146°W, 642m alt.
→ 150 m ↗ 1 m	At the first T-Junction turn right onto the unsurfaced track, sign-posted BAZA (hand-painted sign) and "E4/GR-7 P. Negratin lh45m" (carved wooden signpost).
4	Fork in track, Cortijo Grande : 37.599850°N, -2.777636°W, 643m alt.
→ 1 km ↘ 10 m	There is a concrete block at the fork in the track. Bear right, turning away from Jabalcón. Follow the track, with the River Guardal valley on the right and a cliff on the left for about 1km. Castillo Benzalema is visible ahead on a limestone bluff. About 50m after a 'hairpin' bend where the goat track crosses the head of a small tributary stream bed, there is a fork (Way Point 5).
5	Fork in track, below Castillo Benzalema : 37.601115°N, -2.786694°W, 633m alt.
← 400 m ↗ 49 m	Take the left fork in the track heading uphill. The Castillo is not actually visible from here. There are cairns of piled stones on the right-hand side of the path marking the route.
6	Geo Parque sign post, Castillo Benzalema / Humedal del Pantano 220m 37.600533°N, -2.790186°W, 682m alt.
→ 220 m ↘ 28 m	At the junction between paths there is a wooden Geo Parque signpost "220m Castillo Benzalema y Humadel del Pantano". Turn right and follow the gravel path with wooden marker posts in the direction of Castillo Benzalema to the viewpoint.
7	Geo Parque View-point below Castillo Benzalema : 37.601701°N, -2.790147°W, 654m alt.
← 200 m ↗ 29 m	The fenced Geo Parque viewpoint with information board overlooks the confluence of the Guardal and Castril valleys which feed into the Negratin reservoir. To climb up to the ruined Castillo, follow the stone-lined path up the terraced slope.
8	Castillo Benzalema : 37.600968°N, -2.791969°W, 683m alt.
→ 200 m ↘ 29 m	After visiting the Castillo, return down the terraced slope to the viewpoint / information board (Way Point 7).
7	Geo Parque View-point below Castillo Benzalema : 37.601701°N, -2.790147°W, 654m alt.
↑ 200 m ↗ 28 m	Return along the gravel path to the wooden Geo Parque signpost "220m Castillo Benzalema y Humadel del Pantano" (Way Point 6).
6	Geo Parque sign-post, Castillo Benzalema / Humedal del Pantano 220m 37.600533°N, -2.790186°W, 682m alt.
↑ 50 m ↗ 1 m	Stay on the path towards the next wooden Geo Parque signpost, rather than turning down the path which you came up on.

9	Geo Parque sign-post, Castillo Benzalema / Humedal del Pantano 37.600190°N, -2.790470°W, 683m alt.
↑ 500 m ↗ 7 m	Follow the track in the opposite direction to the way the sign is pointing, i.e. away from Castillo Benzalema y Humadel del Pantano. The track initially climbs, then descends steeply and up the other side of a ravine.
10	Geo Parque sign-post, Castillo Benzalema / Humedal del Pantano 780m 37.596588°N, -2.788756°W, 690m alt.
→ 500 m ↗ 39 m	At the wooden Geo Parque signpost take the track round to the right. Alternatively, take a return shortcut here (reduces distance by about 0.5km) cutting across to Way Point 12 rather than continuing via the Canal Jabalcón road. In this case take the track to the left and head towards the white-painted pumping hut directly ahead of you in the olive grove. Pass a wooden-fenced Geo Parque viewpoint and information board overlooking the Baza Fault and Castillo Benzalema.
11	Geo Parque Parking Area and Information Board : 37.594713°N, -2.793036°W, 729m alt.
← 500 m ↘ 7 m	At the parking area, turn left onto the surfaced Canal Jabalcón service road. Follow the road, with the concrete irrigation canal on your right, for about 500m. Look out for the next bridge across the canal with blue railings. There is a "Cota Privado de Caza" sign on a pine tree on the left opposite the bridge. Immediately before the bridge (10m) there is a track on the left down into the olive grove past a white-painted pumping hut. Cortijo Grande is visible straight ahead in the distance.
12	Track Junction with Canal Jabalcón Road : 37.593600°N, -2.787919°W, 722m alt.
← 1.1 km ↘ 79 m	Turn left down the track through the olive grove past the white-painted pumping hut on the left. Follow the track downhill back towards Cortijo Grande.
4	Fork in track, Cortijo Grande : 37.599850°N, -2.777636°W, 643m alt.
↑ 150 m ↘ 1 m	Continue on the track past the fork, retracing the outward route towards the ruined farmhouse Cortijo Grande).
3	Cortijo Grande : 37.600564°N, -2.776146°W, 642m alt.
← 800 m ↘ 10 m	At Cortijo Grande, turn left back onto the surfaced road. Follow the road back across the River Guardal.
2	T-Junction, Cuevas del Negro, road to Baza : 37.607335°N, -2.774333°W, 632m alt.
← 50 m ↗ 3 m	At the T-Junction with wooden "Las Dunas" sign turn left onto the surfaced road.
1	Stop Sign, junction of Cuevas del Negro (turning to Cortés de Baza) 37.607395°N, -2.775306°W, 635m alt.
→ 150 m ↗ 9 m	Turn right up the steep unsurfaced track following the wooden "Las Dunas" and "Cortes" signposts. Follow signs for "Las Dunas", "Cueva del Granado" or "Cueva del Olivo".
0	Las Dunas, Cuevas del Negro : 37.608663°N, -2.776097°W, 644m alt.